

---

# Events, meetings and functions

---





## Location

Accessible by land or sea, Port Arthur Historic Site is situated only 95km or 1.5 hours from Hobart CBD. Enjoy serene beaches and stunning coastal views as well as geological wonders along the way to Australia's World Heritage-listed convict settlement.

## Activities

Site entry includes an introductory guided tour, harbour cruise, access to the Museum and the Port Arthur Gallery and over 30 buildings and ruins. Additional tours of the Isle of the Dead and Point Puer can be included with the harbour cruise. Hear of the many escape attempts of the site with the Escape from Port Arthur Tour or cover the whole site with the Commandant's Carriage Tour; an electric vehicle tour.



## Facilities

The Historic Site covers more than 100 acres of grounds, gardens, convict ruins, restored period houses and self-guided trails.

Meeting and event facilities include indoor and outdoor venues, barbeque facilities and presentation equipment if required.

Visitor Guides are available in English, Japanese, Chinese, Spanish, German and French.

Accessibility options and transport for patrons of restricted mobility are available.



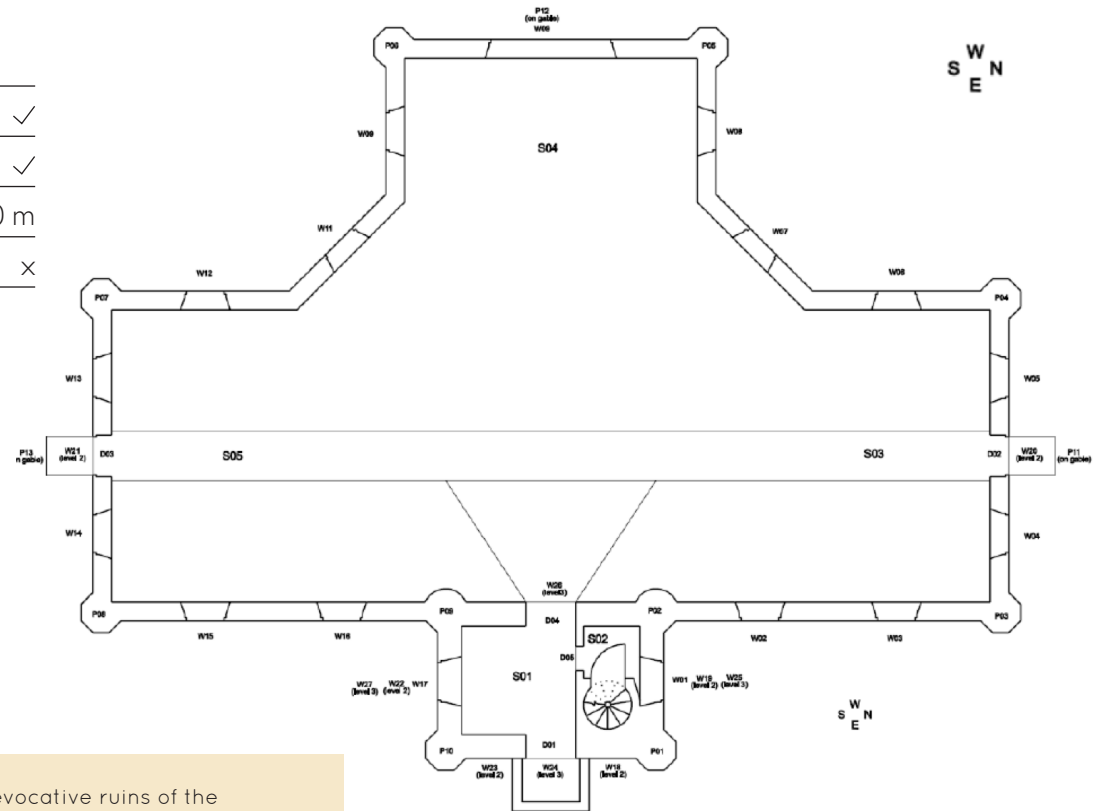
# Convict Church

## Specifications

Max seated	150 pax
Max standing	300 pax
Length	25 m
Width	20.5 m at widest section

## Facilities

Accessibility	✓
Power outlets	✓
Toilets	within 50 m
Undercover	×



The evocative ruins of the Port Arthur Convict Church is a favourite venue for a multitude of events and functions.

This outdoor venue is ideal for large gatherings.

# Government Gardens

## Specifications

Max seated	100+ pax
Max standing	200 pax
Size	approximately 2 acres

## Facilities

Accessibility	✓
Power outlets	×
Toilets	×
Undercover	×

Government Gardens was constructed under the direction of Commandant Champ for the ladies of the settlement. Today, it has been restored to reflect the Victorian formal gardens of the Port Arthur convict period. A beautiful setting for any outdoor event.



# Junior Medical Officer's Meeting Room

## Specifications

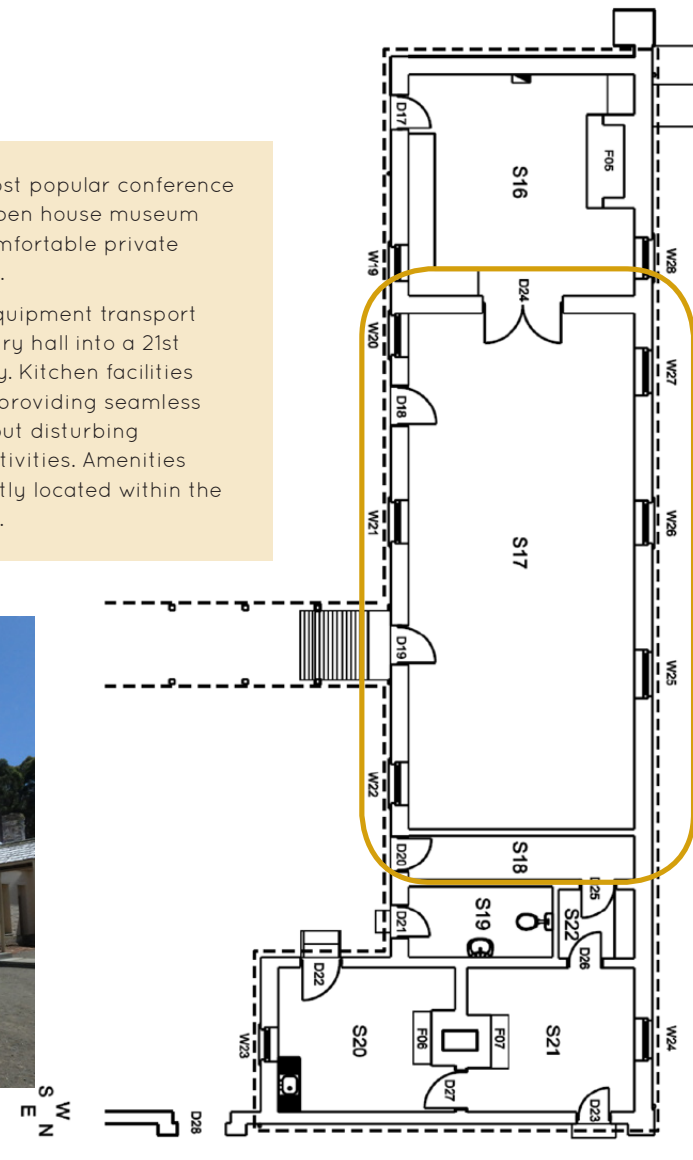
Max seated	50 pax
Theatre style	30 pax
Max standing	60 pax
Length	12 m
Width	5 m

## Facilities

Accessibility	✗
Power outlets	✓
Wifi	✓
Toilets nearby	✓

One of our most popular conference venues, this open house museum provides a comfortable private meeting room.

Conference equipment transport this 19th century hall into a 21st century facility. Kitchen facilities are attached, providing seamless catering without disturbing conference activities. Amenities are conveniently located within the same building.



# Asylum Central Hall

## Specifications

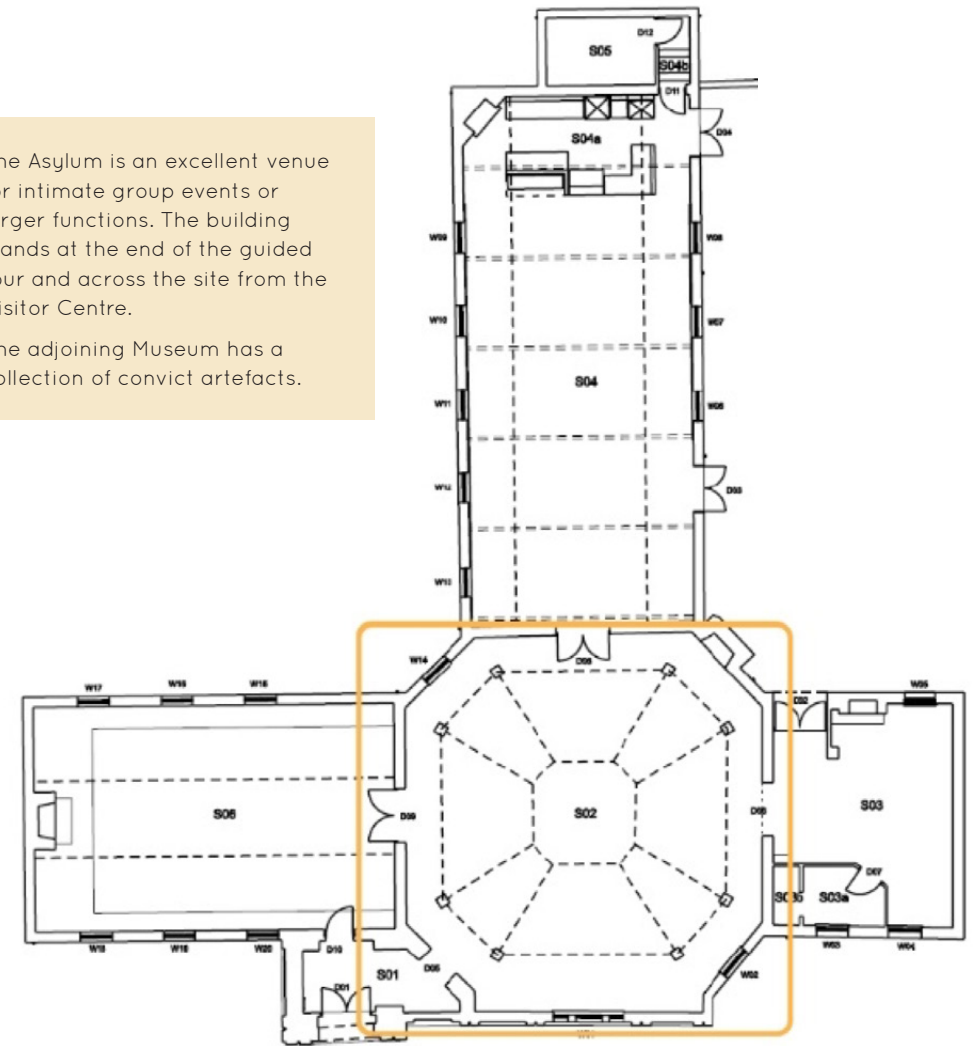
Max seated	110 pax
Theatre style	300 pax
Max standing	150 pax
Length	12.5 m
Width	12 m

## Facilities

Accessibility	✓
Power outlets	✓
Wifi	✓
Toilets nearby	✓

The Asylum is an excellent venue for intimate group events or larger functions. The building stands at the end of the guided tour and across the site from the Visitor Centre.

The adjoining Museum has a collection of convict artefacts.



# Museum Café and Courtyard

## Specifications (Café)

Max seated	80 pax
Max standing	100 pax
Length	14.5 m
Width	7.5 m

## Facilities

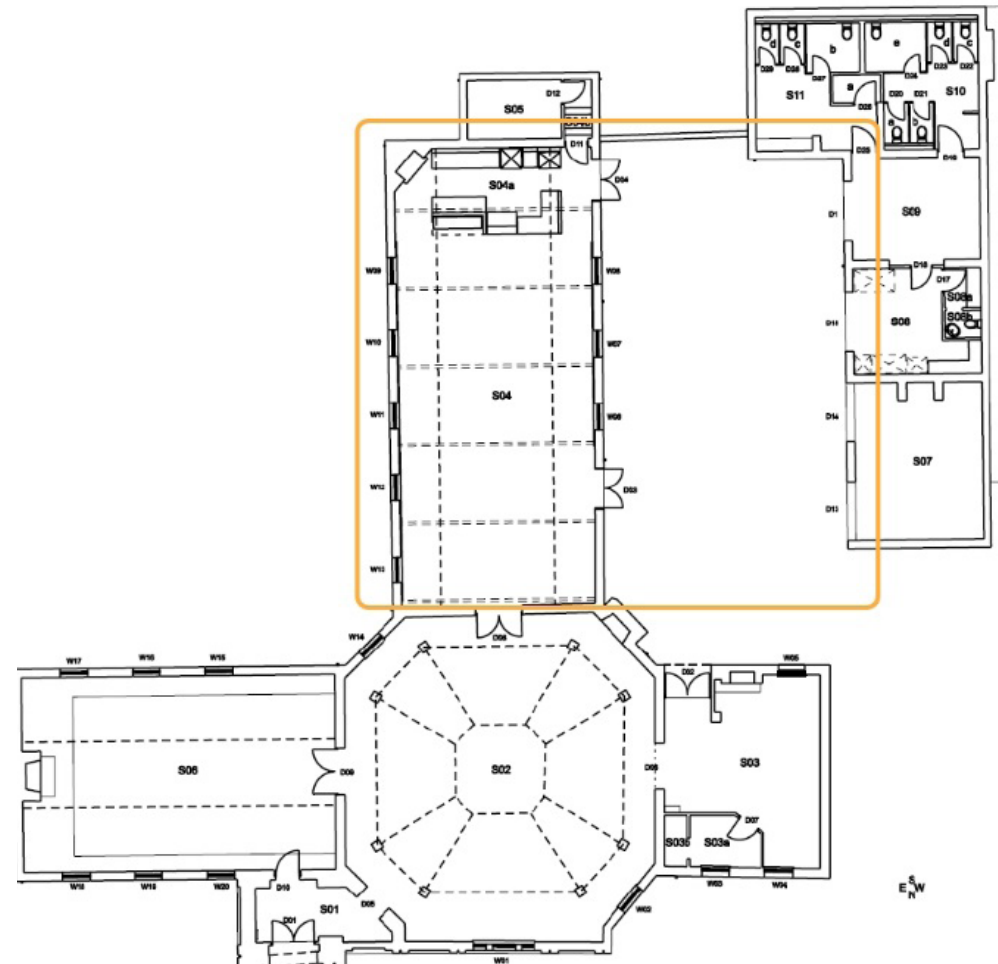
Accessibility	✓
Power outlets	✓
Wifi	✓
Toilets nearby	✓

## Specifications (Courtyard)

Max seated	76 pax
Max standing	140 pax
Length	15 m
Width	9.5 m

Café kitchen facilities in this large hall space allows a superb range of catering for all requirements. Suits small and large gatherings.

In addition, there is outdoor and undercover seating available in the courtyard.



# Visiting Magistrate's House

## Specifications

Max seated	30 pax
Max standing	30 pax
Length of each of 3 rooms	4.5 m
Width of each of 3 rooms	4.5 m

## Specifications (Verandah)

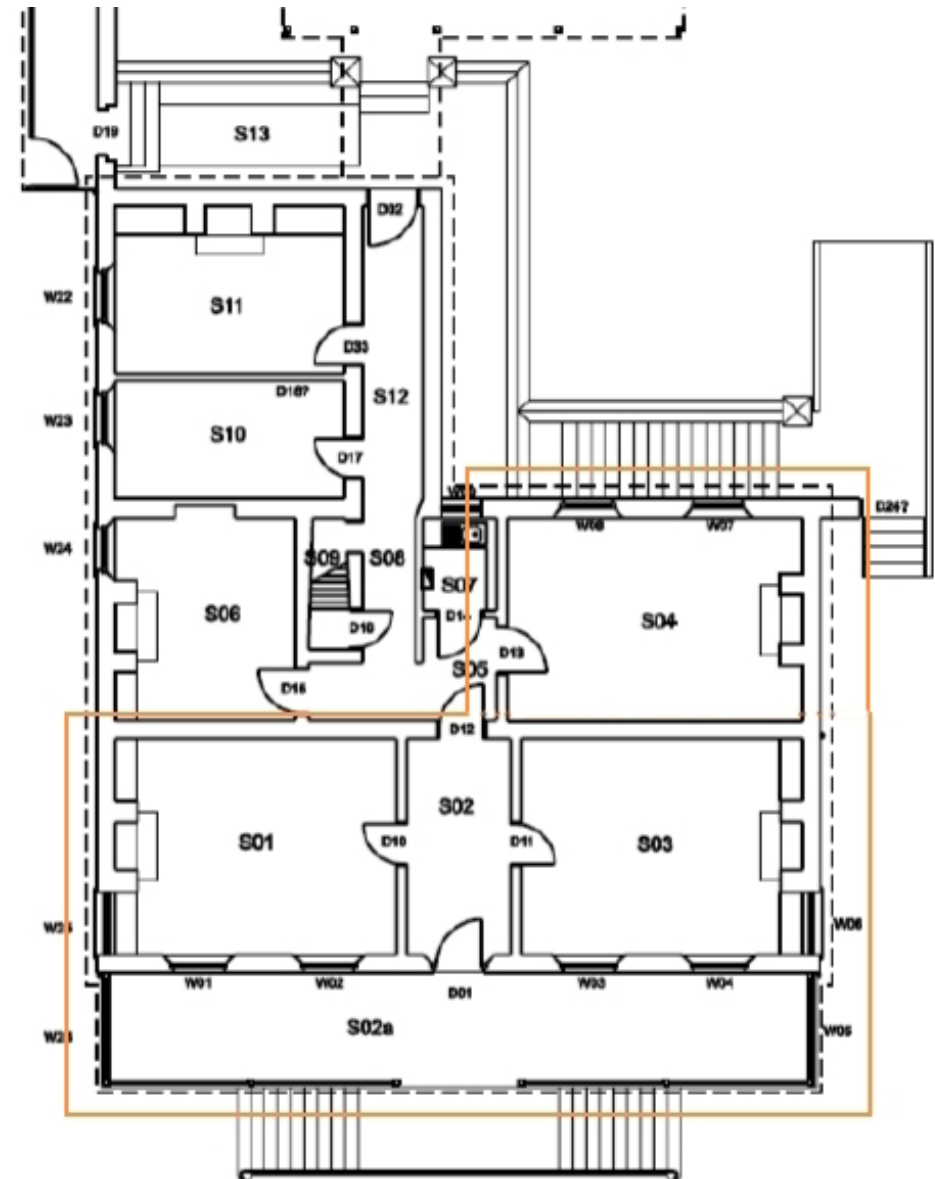
Max seated	18 pax
Max standing	30 pax
Length	14.8 m
Width	2 m

## Facilities

Accessibility	✓
Power outlets	✓
Wifi	Limited spots
Toilets nearby	✓

Catering for exclusive small meetings, incentive groups and private dining.

Constructed in 1847 for the Visiting Magistrate, this historic home was converted for use as a private hotel and renamed *Clougha* after the convict settlement closed.





# 1830 Restaurant and Bar

## Specifications

Max seated	74 pax
Max standing	120 pax
Length	14 m
Width	6.5 m

## Facilities

Accessibility	✓
Power outlets	✓
Wifi	✓
Toilets nearby	✓



Opened in January 2018 this space is designed to inspire and capture the panoramic and unique views of the historic site.

The kitchen facilities are state-of-the-art and eco-friendly. Our head chef showcases local producers and their seasonal products.



---

## Catering

All catering, including the supply and serving of beverages, is to be provided by the Port Arthur Historic Site Management Authority.

---

## Equipment hire

Please enquire about additional furniture and equipment available for hire.

---

## Payment

A deposit of 50% of the total fee is due 60 days prior to the event. The final payment must be made on or prior to the day of the event.

---

## Contact

Mary Boon  
Functions & Niche Groups Coordinator  
Port Arthur Historic Site  
Management Authority  
(03) 6269 7981  
[mary.boon@portarthur.org.au](mailto:mary.boon@portarthur.org.au)

