



FREYCINET LODGE

SALES TOOLKIT



ROOM TYPES

TYPE	RATING	ROOMS	CONFIG	QUALITIES	FEATURES
Coastal Pavilion – Bay View	4.5*	3	1 King	Natural, elegant and grounded. Our Coastal Pavilions are superbly designed to immerse you in the surrounding environment. Includes water view or direct water access.	<ul style="list-style-type: none"> • Outdoor bath – single person • Spacious balcony • Television, mini bar, coffee machine, free movies, free WiFi • In-room breakfast option • Optional hosted check-in • See Coastal Pavilions sales tool kit for additional inclusions
Coastal Pavilion	4.5*	6	1 King	Natural, elegant and grounded. Our Coastal Pavilions are superbly designed to immerse you in the surrounding environment. Does not include water view.	<ul style="list-style-type: none"> • Outdoor bath – single person • Spacious balcony • Television, mini bar, coffee machine, free movies, free WiFi • In-room breakfast option • Optional hosted check-in • See Coastal Pavilions sales tool kit for additional inclusions
Premier Spa Cabin	4.5*	10	1 King	Beautifully appointed cabin accommodation with a spacious granite bathroom and a separate double spa bath overlooking the picturesque natural setting.	<ul style="list-style-type: none"> • Double spa bath • Private balcony • Television, mini bar • En suite bathroom with walk-in shower and separate toilet • Fluffy towels, bathrobes and slippers
Mountain Terrace King	4*	4	1 King	Stylish new terraced rooms with an offset configuration to ensure privacy. Bush views with glimpses of The Hazards mountains.	<ul style="list-style-type: none"> • Outdoor bath – single person • Open deck • Television, mini bar, coffee machine, pay-per view movies • En suite bathroom with walk-in shower & toiletries
Mountain Terrace Family	4*	2	1 King 2 Single	Stylish new terraced rooms with an offset configuration to ensure privacy. Bush views with glimpses of The Hazards mountains. Family configuration.	<ul style="list-style-type: none"> • Outdoor bath – single person • Open deck • Television, mini bar, coffee machine, pay-per view movies, En suite bathroom with walk-in shower & toiletries
Lodge King (Wheelchair access)	4*	1	TBD	Arguably Freycinet Lodge’s most spectacular room, with an outlook over Great Oyster Bay as well as glimpses of The Hazards. Located in the main Lodge, this room is wheelchair accessible.	<ul style="list-style-type: none"> • Outdoor bath – single person • Dedicated deck • Television, mini bar, coffee machine, pay-per view movies, En suite accessible bathroom & toiletries, Wi-Fi, phone
Family Cabin	4*	16	1 King 2 Single 1 Sofa bed	A comfortable lounge area and a king-sized bed in the main room. Twin single beds are located in a separate bedroom. An excellent option for families or multiple couples seeking to share.	<ul style="list-style-type: none"> • En suite (dual access) bathroom with walk-in shower • Private balcony • Television, mini bar • Kitchenette with cooking equipment available on request
One Room Cabin	4*	30	1 King 1 Sofa bed	This expansive cabin features a king-sized bed and sofa bed in an open living area. Glass doors lead to a private balcony.	<ul style="list-style-type: none"> • En suite bathroom with walk-in shower & toiletries • Private balcony • Television, mini bar

ROOM TYPES

COASTAL PAVILION
BAY VIEW



COASTAL PAVILION



PREMIER SPA CABIN



MOUNTAIN TERRACE
KING



MOUNTAIN TERRACE
FAMILY



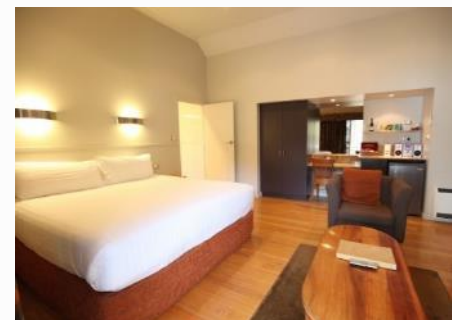
LODGE KING
(WHEELCHAIR ACCESS)



FAMILY CABIN



ONE-ROOM CABIN



DINING

OPTIONS AT THE LODGE

THE BAY RESTAURANT

- Offers a premium contemporary Australian dining experience
- Unparalleled setting overlooking Great Oyster Bay
- Focus on fresh local seafood and exceptional regional wines
- Showcasing regional producers throughout our menu
- Open for breakfast and dinner

RICHARDSON'S BISTRO

- Casual seaside eatery welcoming all visitors
- Fresh local seafood is a highlight
- Menu is approachable, with some extras for adventurous diners
- Open seasonally for lunch and dinner
- Outdoor dining available, overlooking the bay

HAZARDS BAR & LOUNGE

- The place to relax after a day exploring the region
- Expansive drinks list with a focus on Tasmanian producers
- Relax by the open fire in the cooler months



OTHER FACILITIES AT FREYCINET LODGE

PARKING

Parking at the Lodge is free for all visitors. Guests have an individual parking space dedicated to their room. Bus parking is available for groups.

LAUNDRY

Coin-operated guest laundry facilities are available at the Lodge

WI-FI

Free public Wi-Fi is available in the main Lodge. This can be accessed by guests and visitors. Wi-Fi is also available in the Coastal Pavilions and Mountain Terrace rooms.

CONFERENCES AND EVENTS

Conference and events facilities are available at Freycinet Lodge, with our venues allowing scalable options for groups of varying size.

PROVIDORE WINEGLASS

A showcase of regional Tasmanian produce, including snacks for the trails, local wines and gifts for home.

FREQUENTLY ASKED QUESTIONS

Is room service at Freycinet Lodge?

Freycinet Lodge doesn't offer room service across the property, however breakfast hampers can be offered to the Coastal Pavilions and a range of share platters are available for delivery to the pavilions on request.

When is check-in time?

Check-in is available from 2PM at Freycinet Lodge.

Is early check-in or late check-out available on request?

We always aim to accommodate special requests such as this but can't make a guarantee

Will my mobile phone work at Freycinet Lodge?

Mobile phone service on the east coast of Tasmania is reasonably reliable via the Telstra network, however it's worth noting that there are still areas without service. A public phone is available at Lodge reception.

Do I need to buy a national parks pass?

If you're planning on staying overnight at the Lodge, yes you require a valid and current Tasmanian National Parks pass. Passes are available at Lodge reception.

Do your rooms have water views?

Some rooms at Freycinet Lodge have full water views and others have views of the surrounding bushland. We never promise water views, with the exception of room types that have views as a feature.

Are your rooms self-contained?

Only our Family Cabins offer kitchen facilities and equipment. Kitchen equipment is available upon request from reception.

For a full list of FAQs, please [CLICK HERE](#)